

Figure S1. Elements of the male genitalia and forewings measured and included in the morphometric analysis. A, Lateral view of the male genitalia valva of Croatian specimen RVcoll.09-V363. B, Ventral view of the left forewing of Spanish specimen RVcoll.07-F038. C, Dorsal view of the right forewing of Spanish specimen RVcoll.07-F038.

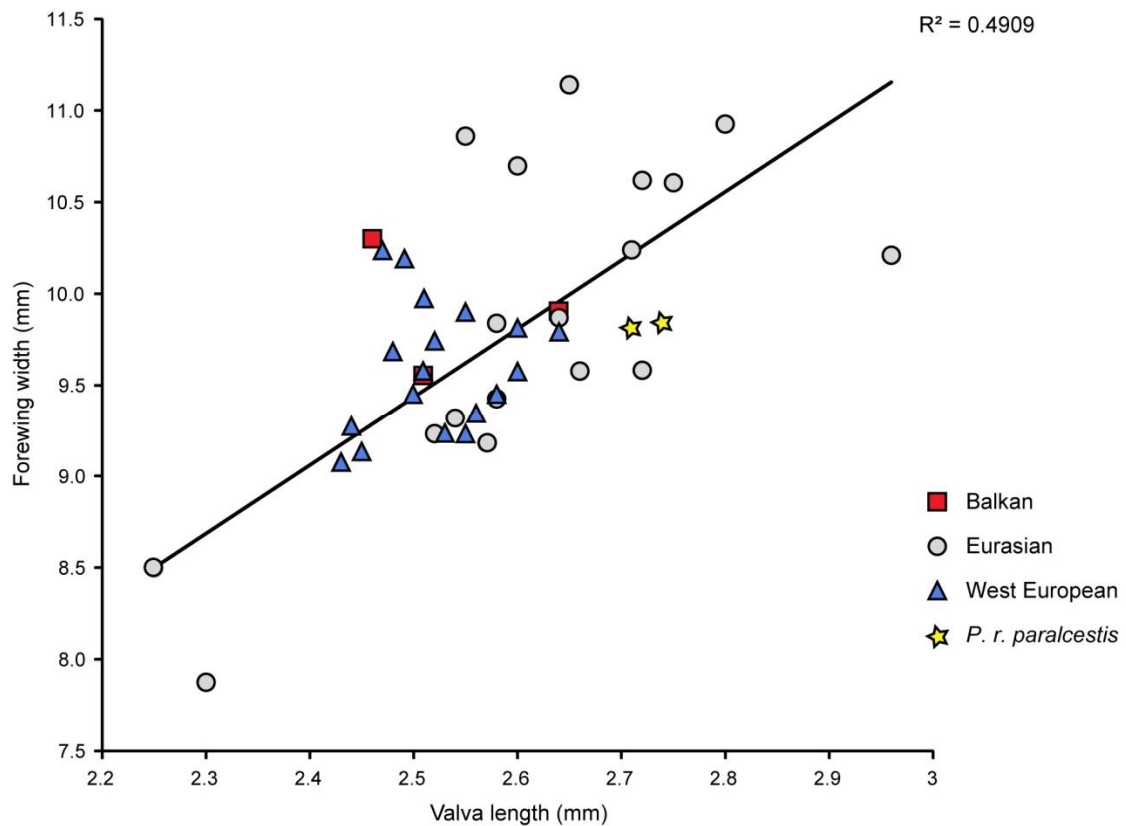


Figure S2. Bivariate scatter plot of valva length and forewing width in 41 male specimens of *P. ripartii* identified through phylogenetic analysis of mitochondrial DNA sequences. The four genetic lineages included display broad overlap. There is good correlation between the two parameters ($r=0.700$, $P<0.0001$, two-tailed probability).

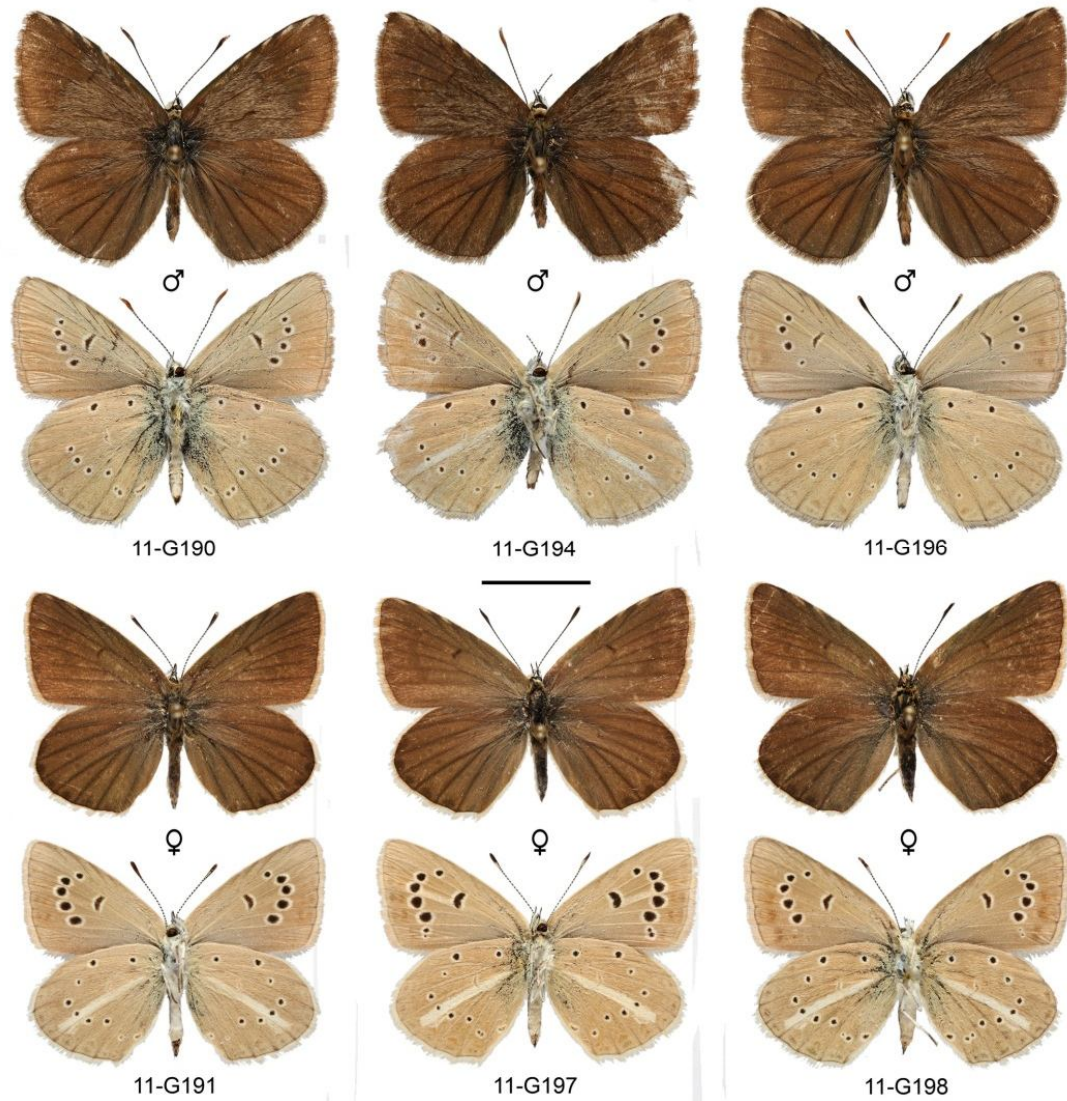


Figure S3. Dorsal and ventral view of representative male and female specimens of Croatian *Polyommatus ripartii* included in this study. Scale bar is ten millimetres.

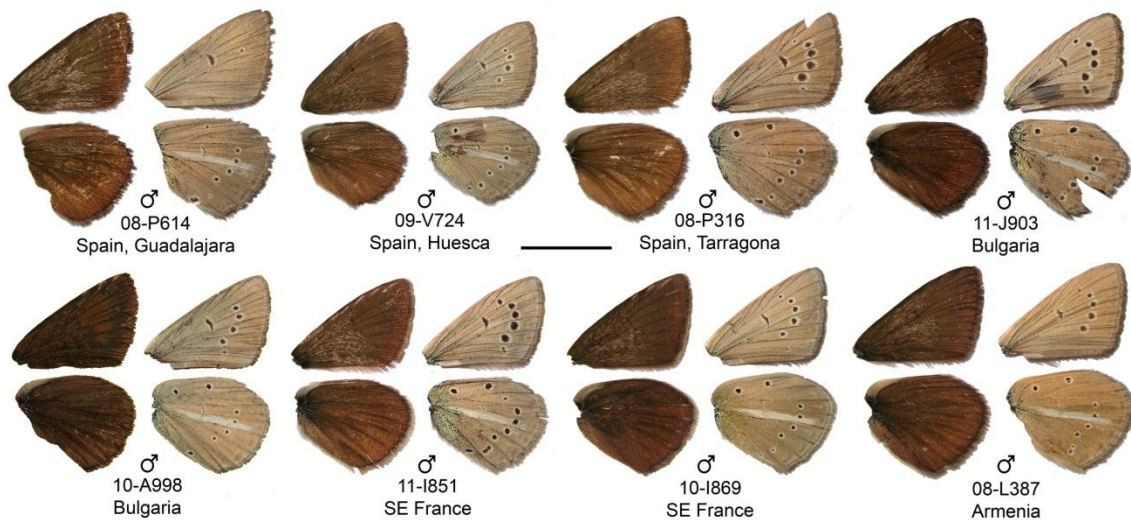


Figure S4. Dorsal and ventral view of representative male specimens of *Polyommatus ripartii* included in this study. Scale bar is ten millimetres.



Figure S5. Views of the habitat of *Polyommatus ripartii* on Mosor Mountain, Croatia (photos M. Runquist)